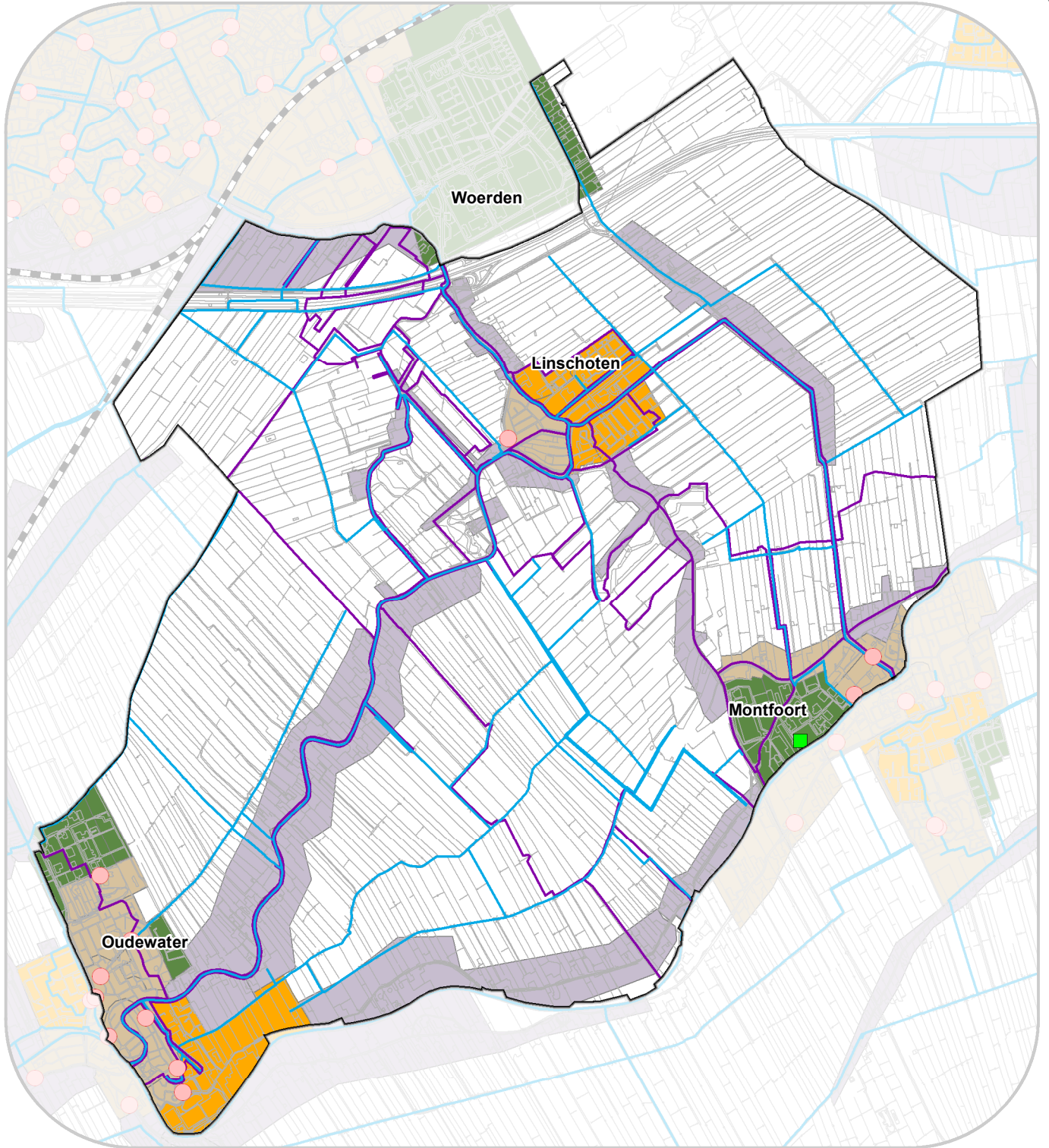


Kaart 15: Riooloverstorten, lozingspunten en RWZI's



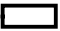

© De auteursrechten en databankrechten van de ondergrond zijn voorbehouden aan de Topografische Dienst Kadaster, Emmen, 2009

0 500 1.000 1.500 2.000 meter

schaal: 1:40.000



Grenzen

-  grens watergebiedsplan Linschoterwaard
-  peilgebied






Watergang

-  primaire watergang

Overstorten en type rioleringsstelsel

-  rioolwaterzuivering

**Soort Lozingsconstructie**

-  traditionele overstort
-  drukiolering
-  gemengd stelsel
-  gescheiden stelsel
-  verbeterd gescheiden